



Archer Exploration Limited
ABN 64 123 993 233
32 Beulah Road
Norwood, South Australia 5067
Australia
Telephone +61 (0)8 8132 0003
Facsimile +61 (0)8 8132 0766
info@archerexploration.com.au
www.archerexploration.com.au

23 May 2008

HIGH RESOLUTION AEROMAGNETIC SURVEY PLANNED FOR WEST ROXBY PROJECT

Archer Exploration has engaged UTS Geophysics to undertake a high resolution aeromagnetic survey over Archer's Island Lagoon, Evelyn Dam and Apollo prospects near Roxby Downs. UTS Geophysics was chosen as they are an acknowledged world leader in ultra high resolution airborne geophysical surveys.

The survey is scheduled to commence in early July and will cover over 3,760 line kilometres, flown at 100 metre intervals.

The high resolution survey will allow the Company to better understand the near surface behaviour of the Gairdner dykes and to identify suitable drillhole collar locations with more certainty.

Aeromagnetic data is a useful tool used extensively in the mineral exploration industry and provides a low cost means of reducing uncertainty and improving the chances of success with Archer's forthcoming diamond drill program at West Roxby.

The new data will be processed and integrated into the comprehensive model already compiled by Archer. The new data will provide considerable finer detail than was available from the data used by previous explorers and will provide additional geological and structural data to assist in better defining drill targets.

The commencement of the high resolution aeromagnetic survey is another step in Archer's continued and calculated exploration program at West Roxby.

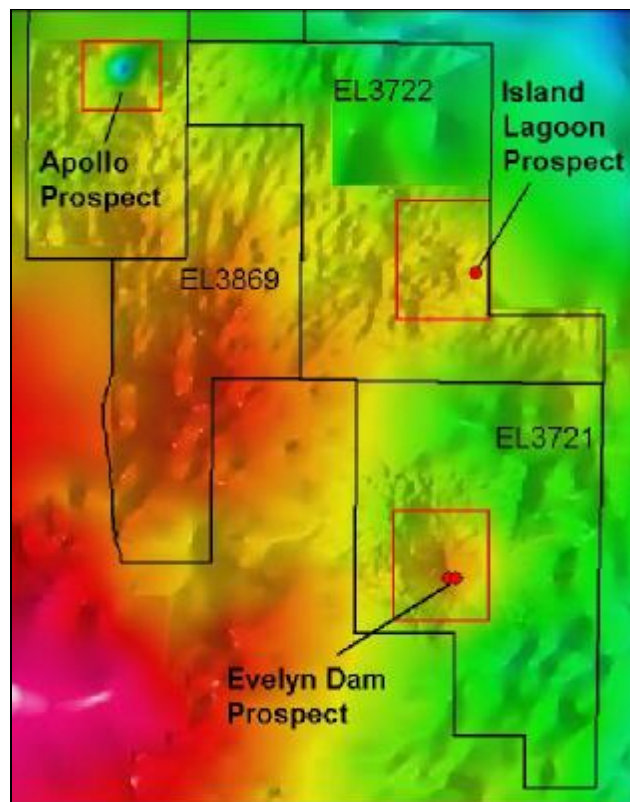
For further information please contact:

Mr Greg English
Non-Executive Director
Archer Exploration Limited
Tel: (08) 8132 0003

Mr Wade Bollenhagen
Exploration Manager
Archer Exploration Limited
Tel: (08) 8132 0003



EL 3721 – Looking west toward Evelyn Dam Prospect



Location of the planned high resolution airborne magnetic survey, outlined in red

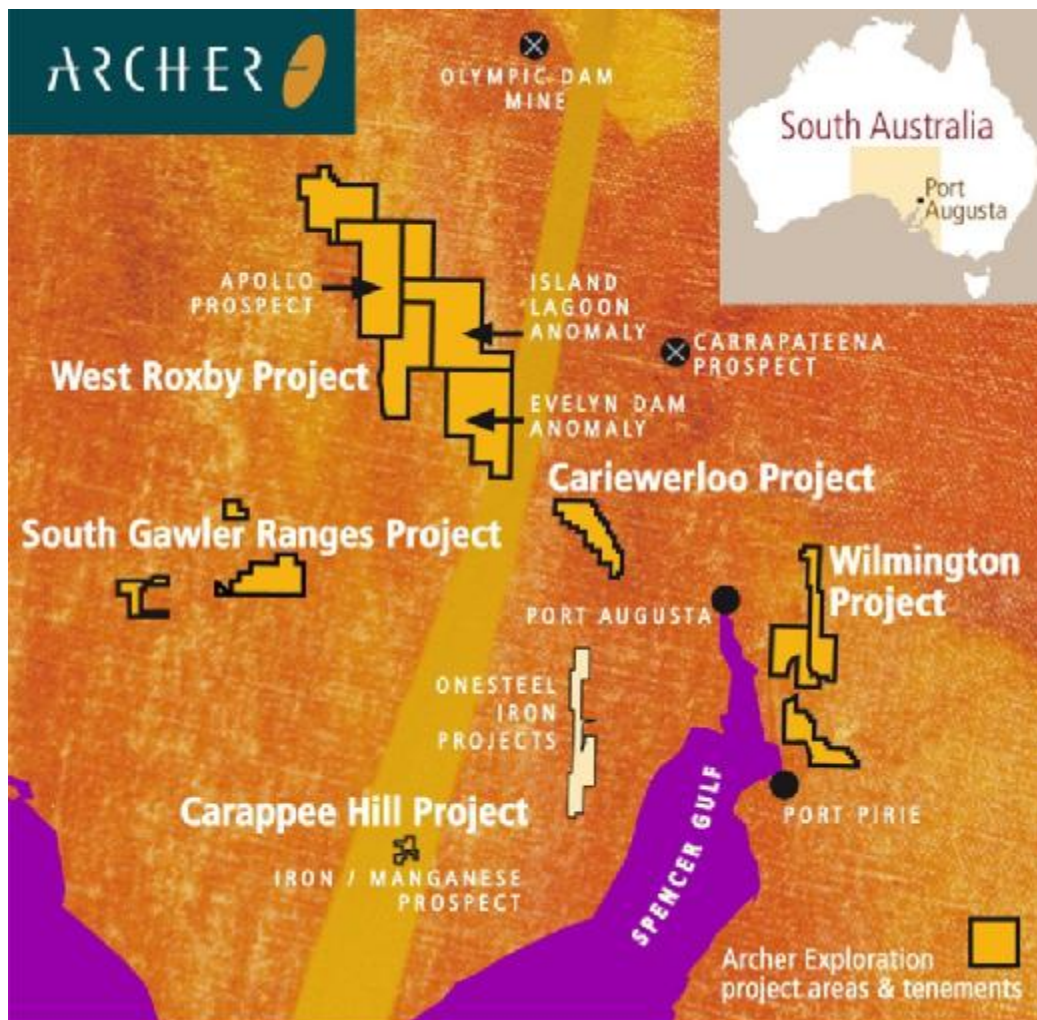


ABOUT ARCHER EXPLORATION

Archer Exploration Limited is an iron ore, manganese and base metals explorer focused on the discovery of world-class deposits. The Company has carefully acquired a portfolio of wholly owned projects in the highly prospective Gawler Craton region of South Australia.

The Company's Caraptee Hill Project on South Australia's Eyre Peninsula contains iron ore grades of up to 57% and manganese grades of up to 31%. The Company is undertaking further exploration at Caraptee Hill and is assessing a range of options for the further development of this exciting project.

The Company is also well advanced on the exploration of its Olympic Dam style iron oxide-copper-gold-uranium (IOCG-U) deposit. The Evelyn Dam anomaly has early geophysical characteristics similar to those of Olympic Dam and the recent Carrapateena discovery.



Map showing Archer's tenements covering prospective iron, manganese and base metal tenements in the Gawler Craton region of South Australia.